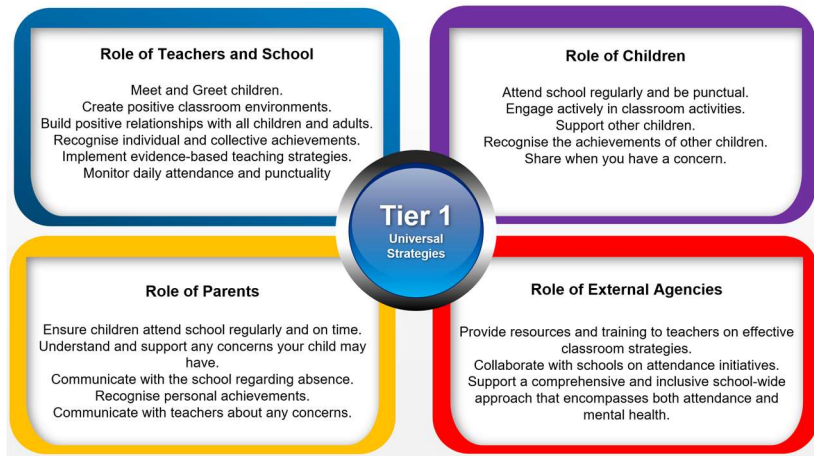
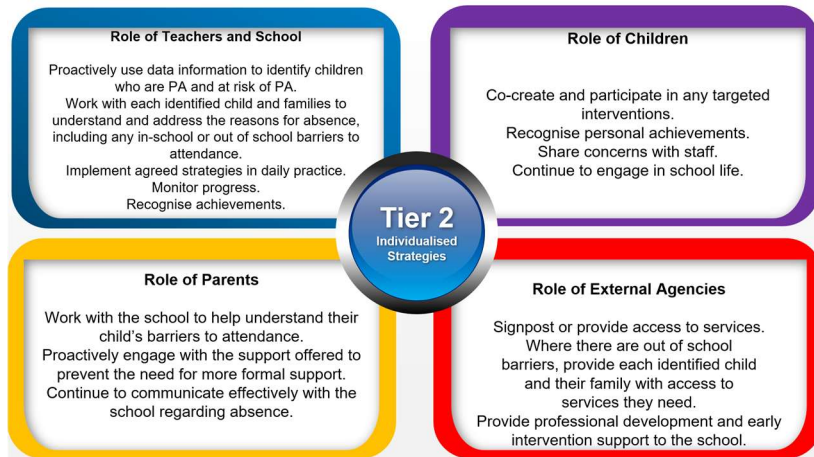


**Tier 1 - Universal Approach: Establishing a baseline universal attendance approach that benefits all children.**



**Tier 2 - Individualised Strategies and Early Help Support: Tailoring strategies to individual needs and providing early help support for persistent attendance challenges.**



**Tier 3 - Higher Needs Strategies Support: Furnishing specialised support for children, young people, and families with complex attendance requirements, including access to external agency support when necessary.**

