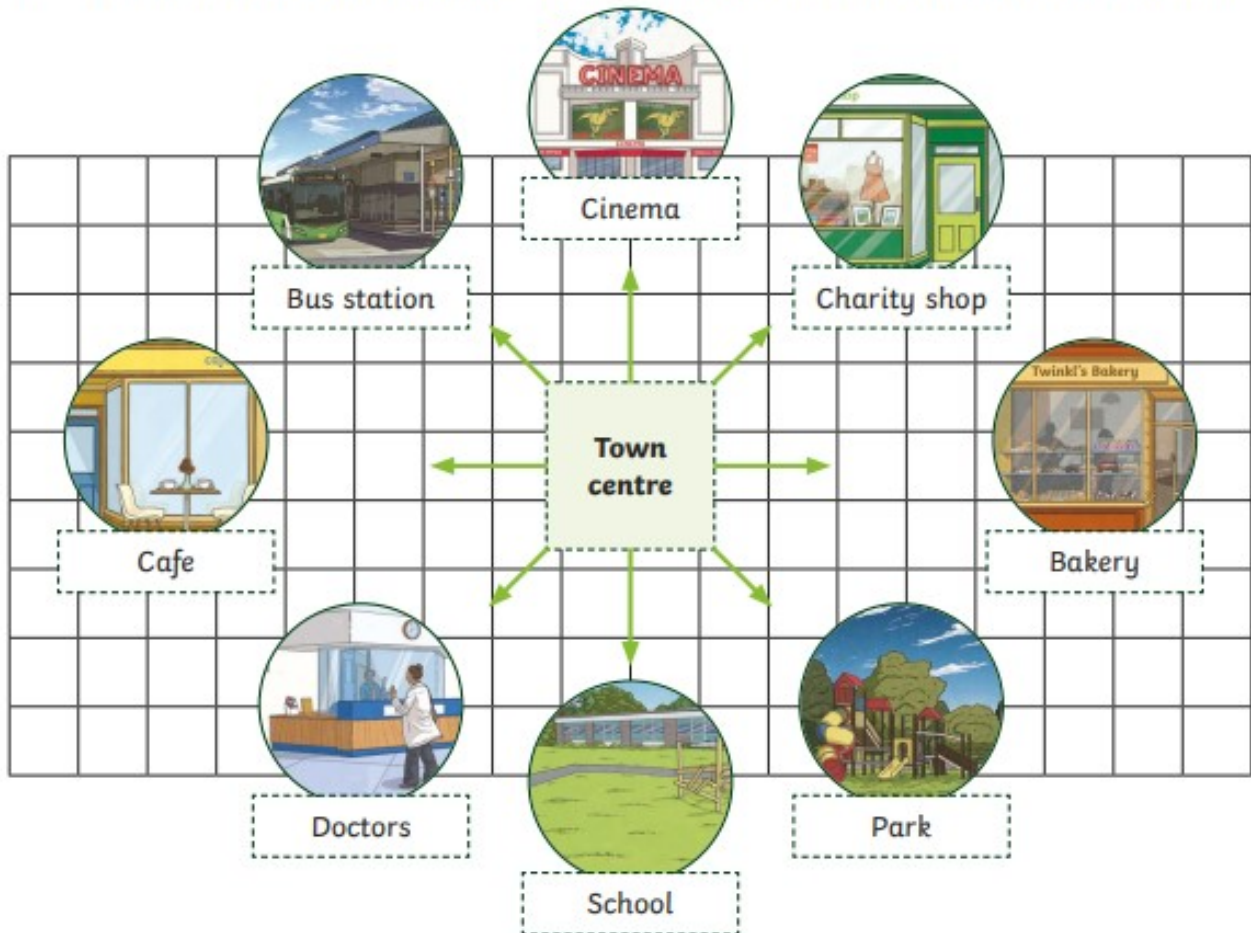


Maths Homework

Learning from this week—23rd April

Mia is standing in the town centre facing the cinema. Use the plan to answer each question.



1. Mia turns 90° clockwise. What is she facing now?
2. Starting from facing the cinema, how many degrees does she need to turn to face the school?
3. She turns 270° clockwise from facing the cinema. What is she facing now?
4. Mia turns to face the park. In which direction and by how many degrees does she now need to turn to face the doctors?
5. If Mia is facing the doctors and turns 180° , what is she facing now?
6. If she is facing the bus station and makes a 360° turn, what is she facing now?
7. Mia turns to face the cafe. In what direction and by how many degrees does she need to turn to face the school?

Times Tables Practice

Please practise your 12 times tables! You will be tested on these next Wednesday.



English Homework

Learning from this week—23rd April

Write 5 sentences including relative clauses e.g.

Hopwood Primary, which is over 100 years old, is currently on the news!

1. _____

2. _____

3. _____

4. _____

5. _____

Tick the correct word to complete the sentence below.

I wanted to read my book _____ it was too dark.

Tick one.

if

but

or

that